

EXHIBIT A

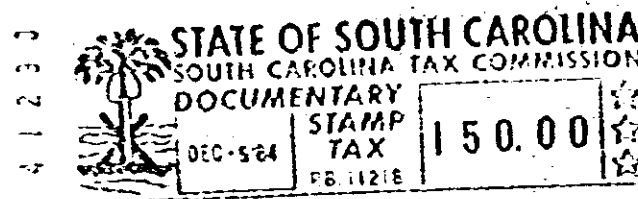
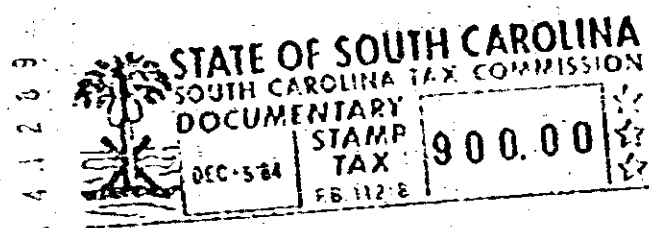
The mortgaged premises shall consist of the following units of the Riverbend Horizontal Property Regime of Greenville County, South Carolina:

PHASE I

#9
#10
#11
#12
#13
#18
#25
#29
#30
#31
#32
#33
#34
#35
#36
#38
#40
#42
#44
#49
#53
#54
#55
#56
#65
#74
#76
#78
#86
#89
#90
#98
#102
#110
#114
#122
#124
#126

PHASE II

#129 #220
#130 #222
#131 #224
#132 #226
#133 #228
#134 #234
#137 #236
#138 #238
#142 #242
#144 #244
#145 #246
#146 #248
#150 #252
#151 #254
#152 #258
#154 #260
#155 #262
#156 #264
#157 #266
#158 #268
#160 #269
#162 #270
#166 #272
#170 #274
#174 #276
#178 #278
#182 #280
#184 #284
#186 #286
#190 #288
#192 #296
#194
#198
#204
#208
#210
#212
#218



RECORDED DEC 5 1984 at 4:50 PM. 17052

4328-11-2